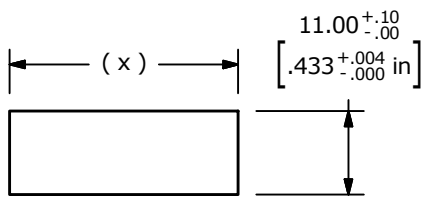
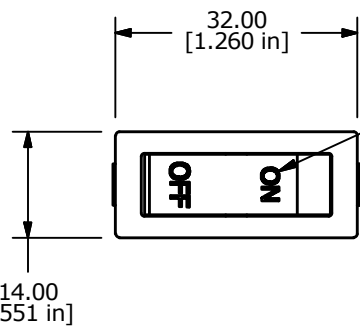


SWITCH FUNCTION	
POS. 1	POS. 2
OFF	ON
NONE	2-1

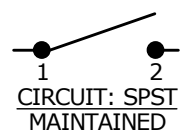
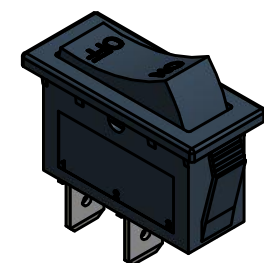


PANEL CUTOUT

PANEL THICKNESS	(x)
0.75 - 1.25	30.0
1.25 - 2.00	30.4
2.00 - 3.00	30.7

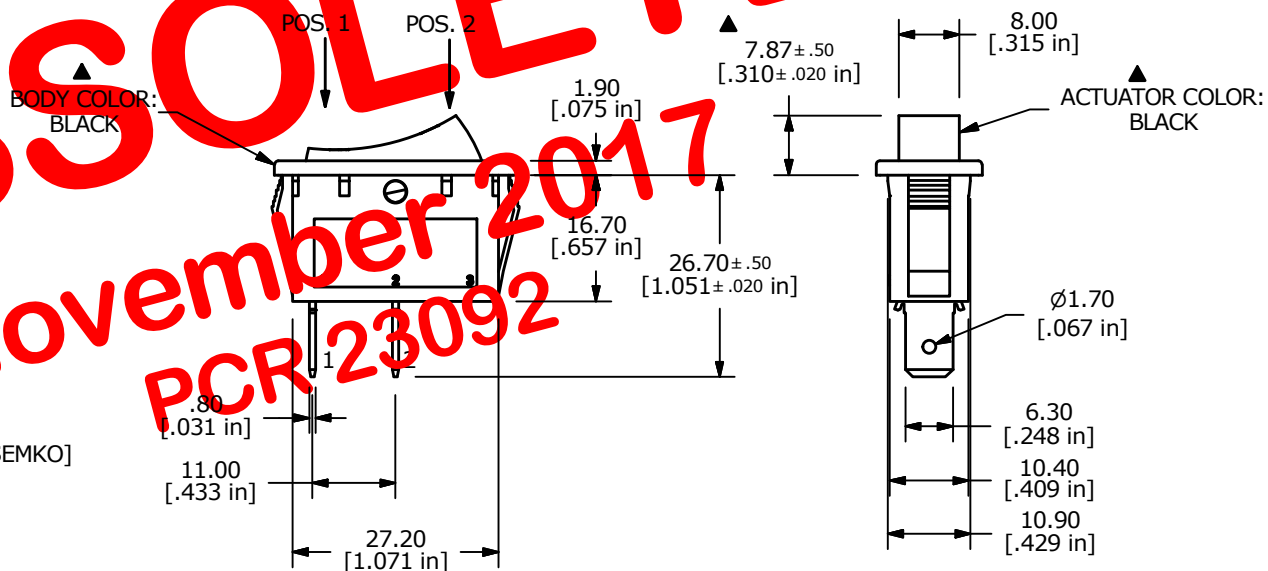


MARKING (3)  
ON-OFF VERTICAL  
COLOR: WHITE



OBSOLETE  
 November 2017  
 PCR 23092

- NOTE:
- DIMENSIONS IN MM [INCH]
  - GENERAL TOLERANCE: X.X = ± 0.4  
X.XX = ± 0.25
  - TERMINAL NUMBERS FOR REF ONLY
  - CONTACT MATERIAL: SILVER
  - CONTACT RATINGS:  
ANSI/UL 1054 AND CAN/CSA C22.2 NO.55 (E194579):  
15A @ 125VAC [cURus]  
7.5A @ 250VAC [cURus]  
EN 61058-1:2002+A2 (SE/09138-1):  
16(4)A 250V~ 1E4 T125/55 [ENEC14, SEMKO]
  - CONTACT RESISTANCE: 35mΩ MAX. @ 50VAC INITIAL
  - INSULATION RESISTANCE: 100MΩ MIN. @ 500VDC
  - DIELECTRIC STRENGTH: 1,500VAC FOR 1 MINUTE
  - ELECTRICAL LIFE: 6,000 CYCLES [cURus]  
10,000 CYCLES [ENEC10, SEMKO]
  - OPERATING TEMPERATURE: -20°C TO 85°C [cURus]  
-20°C TO 125°C [ENEC14, SEMKO]
  - ▲ DENOTES CRITICAL PARAMETER
  - 2002/95/EC (ROHS) COMPLIANT



A	21138	RELEASE FOR PRODUCTION	5/24/13	EBP
REV	PCR NO	DESCRIPTION	DATE	BY

TITLE RB141C1123				
SCALE	DATE	DR	DWG	REV

THE INFORMATION CONTAINED IN THIS DOCUMENT IS PROPRIETARY TO E-SWITCH AND IS NOT TO BE COPIED OR TRANSFERRED

5/24/2013	EBP	38-RB141C1123	A
-----------	-----	---------------	---